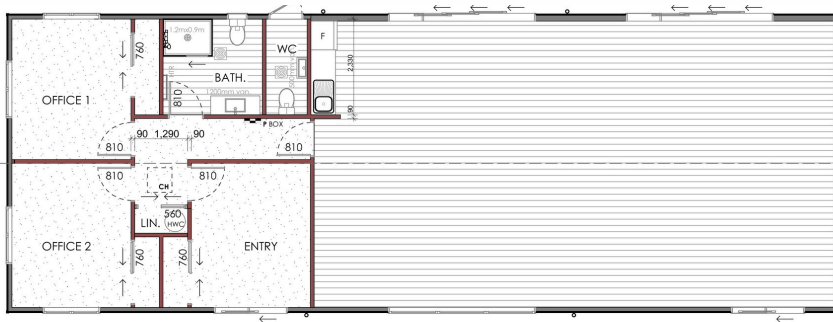


Gable | 2 Toilets | 1 Bathroom | Reception | 2 Offices | Large Open Plan Area | Kitchen



Large floor area with
reception & offices.



Length 20m | Width 7.2m | Area 144m²

Practical, cost-effective solutions **at scale**

Transbuild Commercial offers an innovative construction process covering every aspect of building, from framing to interior fittings, delivering homes and commercial projects in just 6-10 weeks. Our approach maximises efficiency and cost savings without compromising quality. With us managing the build process, clients can focus on site management, saving valuable time and money. Imagine seamlessly integrated lighting, electrical fittings, joinery, and ceilings, streamlining the project. Rest assured, our qualified builders prioritise affordability and durability, building smart while conserving resources

Specification Options

- ✓ N, S, E, W Entry
- ✓ Mirrored or Flipped Plan
- ✓ Architecturally Designed
- ✓ High Quality Home
- ✓ Quality Standard Fittings & Fixtures
- ✓ M255 Compliant
- ✓ Homestar Compliant
- ✓ Pile or Slab
- ✓ Foundation Option
- ✓ Level Entry Access
- ✓ FUD / Accessible

Benefits

- ✓ Simple & Fast
- ✓ 10 Week Build
- ✓ Delivered & Connected to Foundations
- ✓ Fixed Low Price
- ✓ No Hidden Costs