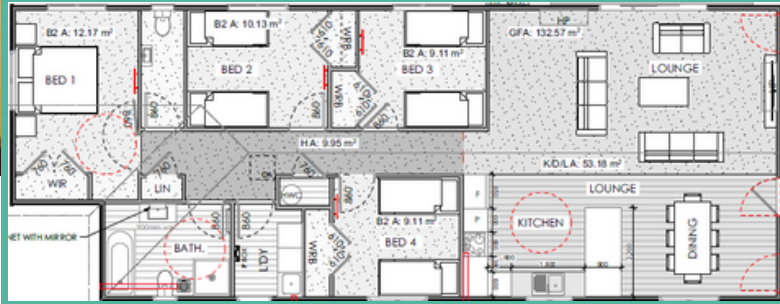


Developer Series | 4 Bedroom | Open Plan Living | 1 Bathroom | Separate Laundry



Example interior only.
Plans can be flipped and mirrored.



Length 19m | Width 7.3m | Area 133m²

Versatile Four-Bedroom Home for Residential Developments

NZ Buyers will be drawn to this modern home featuring a central open-plan hub and four private bedrooms, along with a main bathroom, separate toilet, and laundry area. This home is ideal for property developers seeking efficient, off-site construction solutions.

Specification Options

- ✓ Single or Double Story dwellings
- ✓ Stand alone, Duplex, or Terrace
- ✓ N, S, E, W Entry
- ✓ Mirrored or Flipped Plans
- ✓ Accessibility & FUD
- ✓ M255 compliant design
- ✓ Homestar rated housing
- ✓ Pile or slab foundation options
- ✓ Transbuild Entry Level Plans
- ✓ Investor Spec, Owner Occupier, or Custom Spec

Benefits

- ✓ Use our plans or yours
- ✓ Simple, Fast, Delivered
- ✓ Fixed price: no hidden costs
- ✓ Low cost
- ✓ High quality homes
- ✓ Architecturally designed
- ✓ 8 - 10 week build time