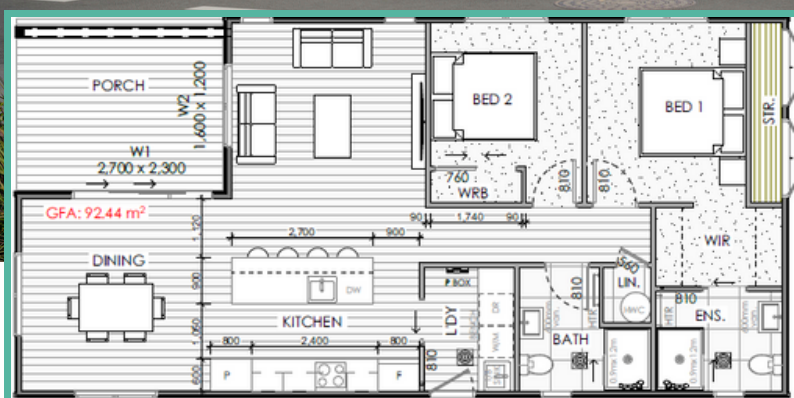


Developer Series | 2 Bedroom | Open Plan Living | 1 Bathroom + Ensuite



Length 14.7m | Width 7.2m | Area 92m²

Artist impression only. Decking not included.
Plans can be flipped and mirrored.



1



2



2



2

Expansive 2-Bedroom Residence **Perfect for Developers**

Designed for both comfort & efficiency, this open-plan living home encompasses everything needed for modern living. The master suite includes a walk-in wardrobe and ensuite, which are highly appealing features for potential buyers. Featuring a charming front porch that is a favourite among Kiwi buyers. This home represents a practical option for residential property development projects, offering the advantages of off-site construction.

Specification Options

- ✓ Single or Double Story dwellings
- ✓ Stand alone, Duplex, or Terrace
- ✓ N, S, E, W Entry
- ✓ Mirrored or Flipped Plans
- ✓ Accessibility & FUD
- ✓ M255 compliant design
- ✓ Homestar rated housing
- ✓ Pile or slab foundation options
- ✓ Transbuild Entry Level Plans
- ✓ Investor Spec, Owner Occupier, or Custom Spec

Benefits

- ✓ Use our plans or yours
- ✓ Simple, Fast, Delivered
- ✓ Fixed price: no hidden costs
- ✓ Low cost
- ✓ High quality homes
- ✓ Architecturally designed
- ✓ 8 - 10 week build time